

ProConnex® MixOne Carboy System

Data Sheet

Efficient, gentle and robust

ProConnex MixOne Carboy Systems provide safe and easy handling of fluids across your process. Equipped with state-of-the-art TrueLev Mixing Technology in a rigid carboy container optimized for all mixing situations, it offers reliable low shear mixing with efficient resuspension capabilities, making it an ideal solution for ALL-stream processes.



The ProConnex MixOne Carboy System has three key components

- The sterile single-use rigid carboy assembly ensures the safety of its contents versus traditional bag technology. And the TrueLev bearing-less fully levitating mix head makes it ideal for low-volume shear-sensitive products providing a reliable, repeatable mixing result every time.
- A reusable drive unit platform where the carboy container docks for mixing can be operated through your existing external control system or through a hand-held control panel.
- A **ProConnex MixOne Secure Carrier** designed for the safe transport of ProConnex MixOne Carboy Containers. It provides a reusable and robust shipping platform for the safe transport of ProConnex MixOne Carboys.

RE_0156_0505_14NOV2024

repligen.com

© 2024 Repligen Corporation. All rights reserved. The trademarks mentioned herein are the property of Repligen Corporation and/or its affiliate(s) or their respective owners.



In mixing, shape is everything



Round Geometries

The round shape helps promote a vortex formation in the liquid. This shape functions like a non baffled vessel, keeping the surface turbulent, and generating a spinning vortex which extends from the surface to the Mix Head.

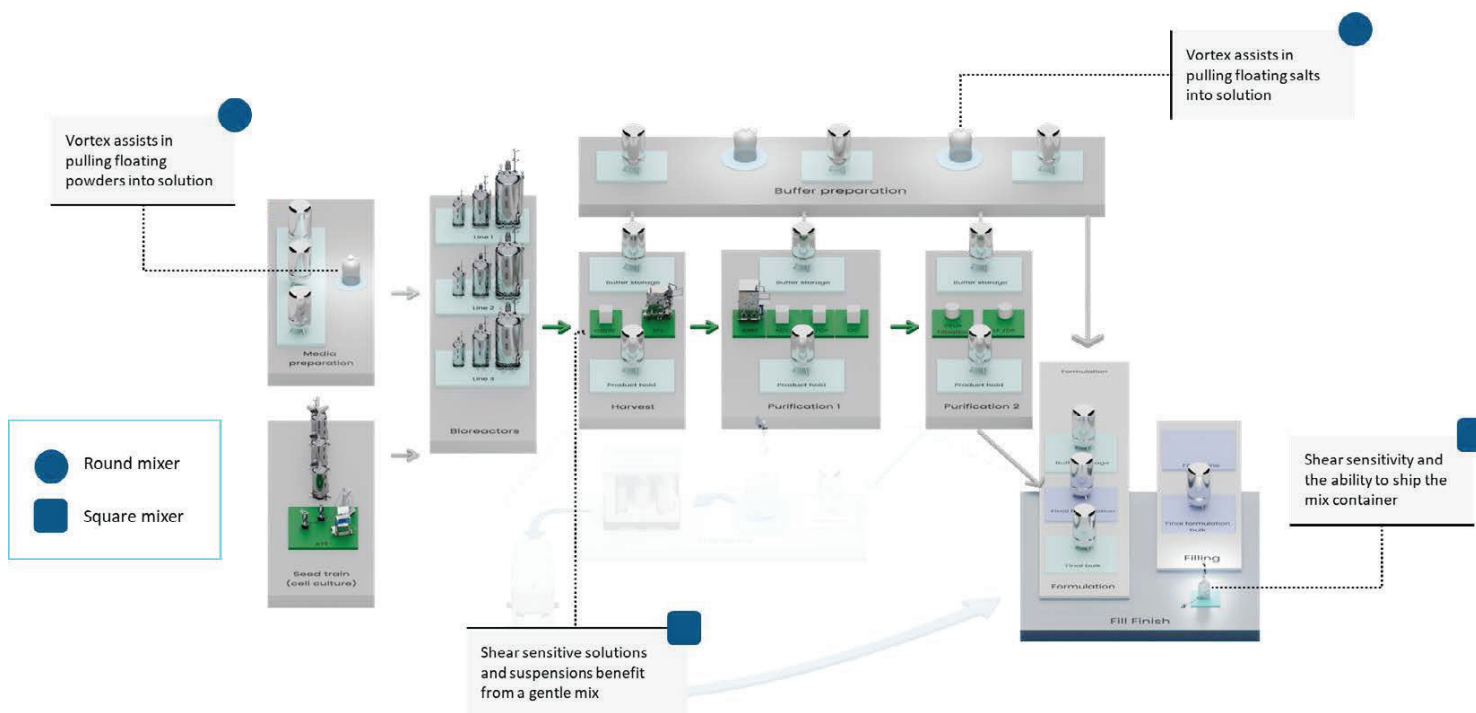
Available in 10L, 20L, and 50L



Square Geometries

The square shape helps eliminate the vortex formation in the liquid. This shape functions like a baffled vessel, keeping the liquid surface flat, while generating convection flow which has a bottom to top motion.

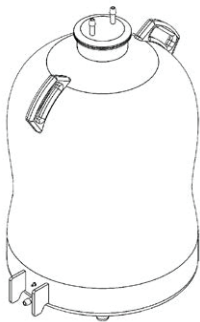
Available in 20L and 40L



Volume and Dimensions

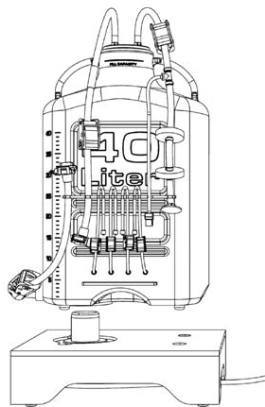


Volume	Length	Width	Height
20L	14.9 in	8.1 in	26.7 in
40L	18.1 in	9.8 in	32 in

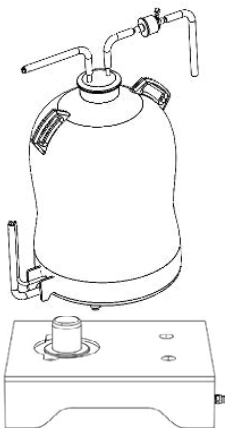


Volume	Diameter	Height
10L	9.5 in	15.3 in
20L	12.6 in	21.8 in
50L	17.2 in	24.6 in

Standard Carboy Configurations



Volume	Product Number
20L	FPMO202718
40L	FPMO202719



Volume	Product Number
10L	FPMO202701
20L	FPMO202716
50L	FPMO202717

Extractables and Biocompatibility

EMA 410 compliant. Certified to meet:

- USP Biological Reactivity Tests, In Vivo USP Class VI
- ISO 10993-11 guidelines for Systemic Injection test
- ISO 10993-10 guidelines for Intracutaneous Reactivity test
- Classified as nonreactive according to the ISO 10993-6 guidelines for Implantation test
- Non-hemolytic per ISO 10993-4, ASTM F756
- All analytical testing conducted post-gamma irradiation > 45 kGy
- Tested for extractables per the April 2020 Biophorum (formerly BPOG) document, "Extractables Testing of Polymeric Single-Use Components Used in Biopharmaceutical Manufacturing." (Post gamma irradiation > 45 kGy)

Sterilization methods:

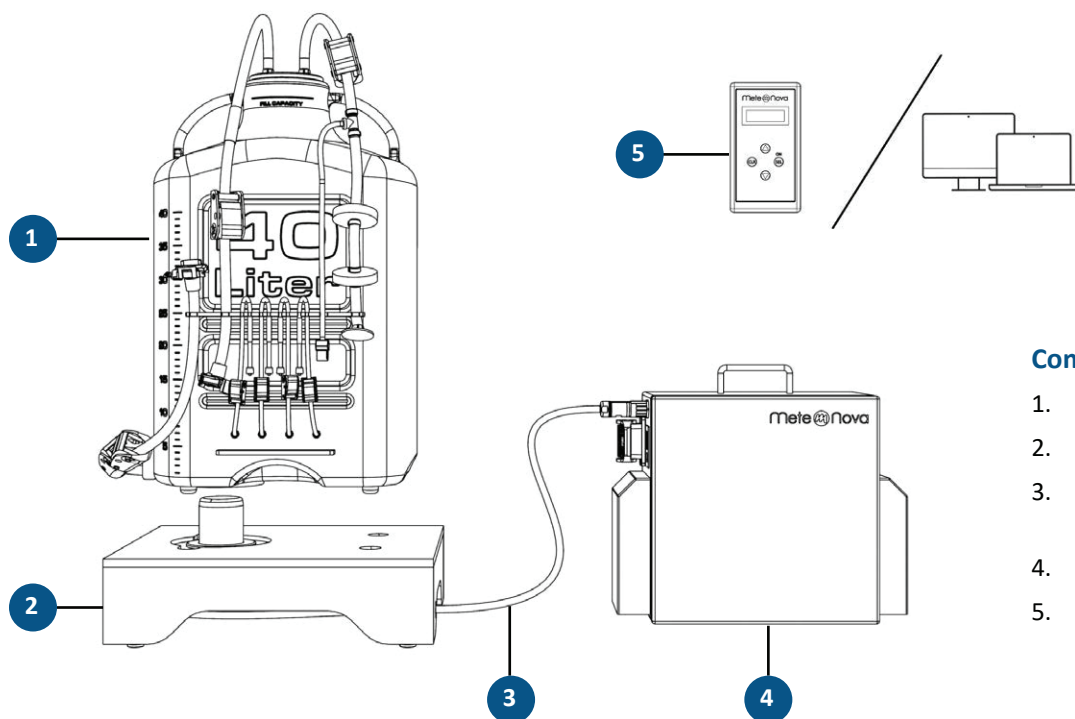
- Gamma irradiation up to 45 kGy

System Layout

The ProConnex MixOne Carboy System consists of a Single-Use Assembly and a Drive Unit Platform. During mixing, the Single-Use Assembly is simply placed on the Drive Unit Platform. The system uses contactless energy transfer utilizing a magnetic field in order to spin the Carboy impeller.

The MixOne Carboy Drive Unit Platform is further connected to a Controller. The Controller can be configured as a simple hand-held device or may be integrated with "House" control software.

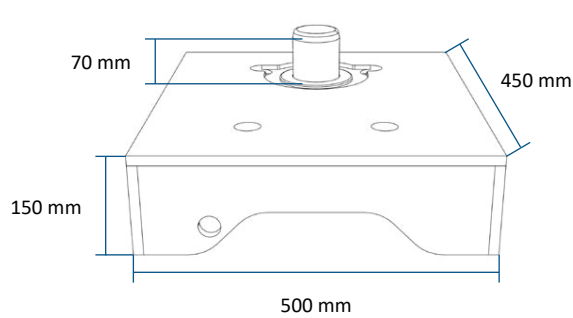
Repligen's experienced team will help you choose the best mixer for your unique process and facility.



Components

1. Single-Use Assembly
2. Drive Unit Platform
3. Interconnect Cable (available in different lengths)
4. Control Cabinet (Controller)
5. User interface (Handheld device/ computer)

Technical Information: Drive Unit Platform



Technical Information	
Motor	0.35 kW
Voltage	Power supplied by controller unit
Certified for Incorporation	CE
Protection Class	IP67

Customer Service

Repligen Corporation
41 Seyon Street
Waltham, MA, USA 02453
customerserviceUS@repligen.com
(781) 250-0111

RE_0156_0505_14NOV2024