



PATsmart™ REBEL® System

Peer-to-Peer (P2P) Networking Guide

Software V1.2

26 Nov 2025

Storage Status Icons



Internal Storage Configured

PATsmart™ REBEL® is ready to run in this mode.



Network Storage Configured

REBEL is ready to run in this mode.



Files Syncing

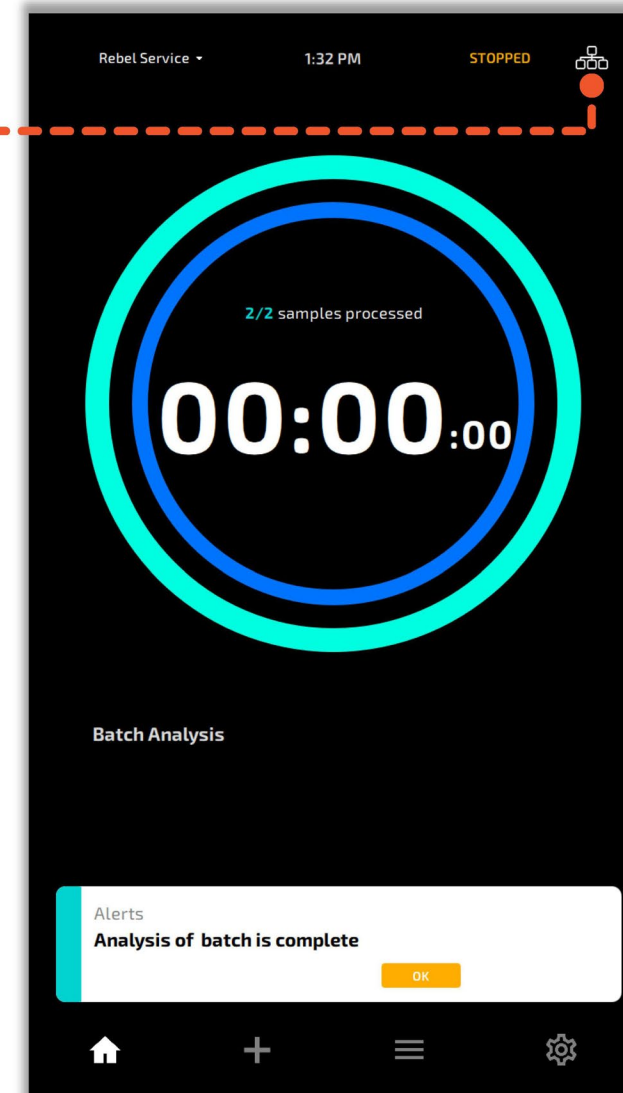
REBEL has files stored locally that are in the process of transferring to the network.



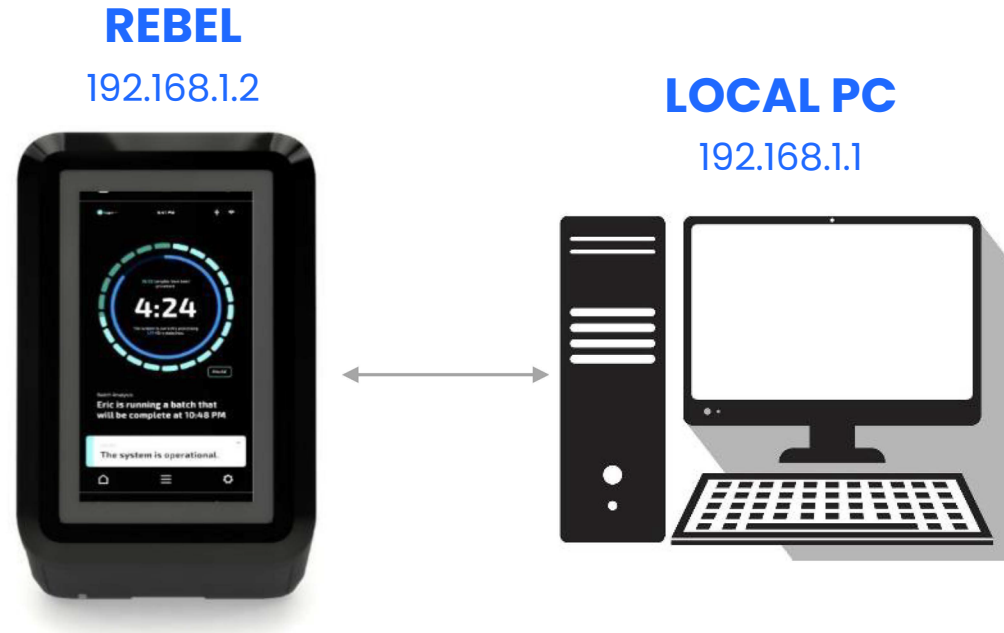
Network Locations Unreachable

REBEL is configured for network storage, but the read and/or write directories are not accessible.

If REBEL was running while the network connection was lost, output files will be stored internally and queued for export until the network connection is restored. **Please do not switch to USB mode if this icon appears as doing so can interfere with data transfer.**



Standard Networking vs. Peer-to-Peer Configuration



Connect through local hub or directly with ethernet cable.

Conventional networking is optimal (refer to 'Networking Guide')

If the standard networking configuration for REBEL is prohibited or unavailable, a peer-to-peer configuration may be set up with support from your IT personnel

*This is an advanced guide for **Windows 10** only*

This allows REBEL to read / write files to a 'network' location where the 'network' location is a local PC configured per the IT / domain network requirements

Local PC – WINDOWS 10: Set a Static IP

Set a static IP on the LOCAL PC
(Example: 192.168.1.1, as seen below)

The screenshot illustrates the steps to configure a static IP in Windows 10. It features three overlapping windows:

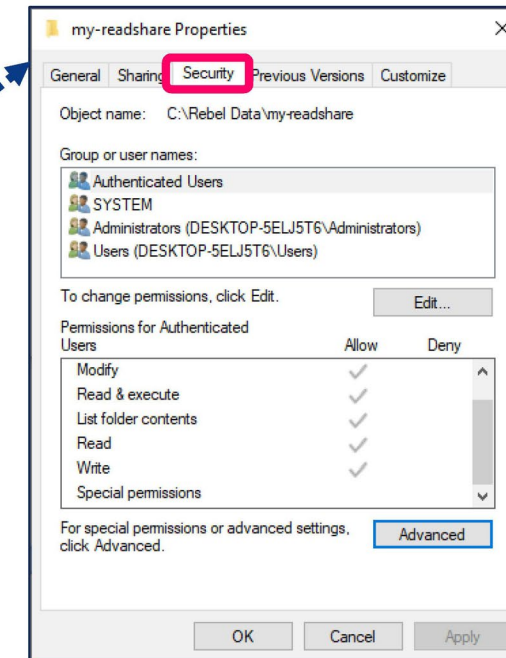
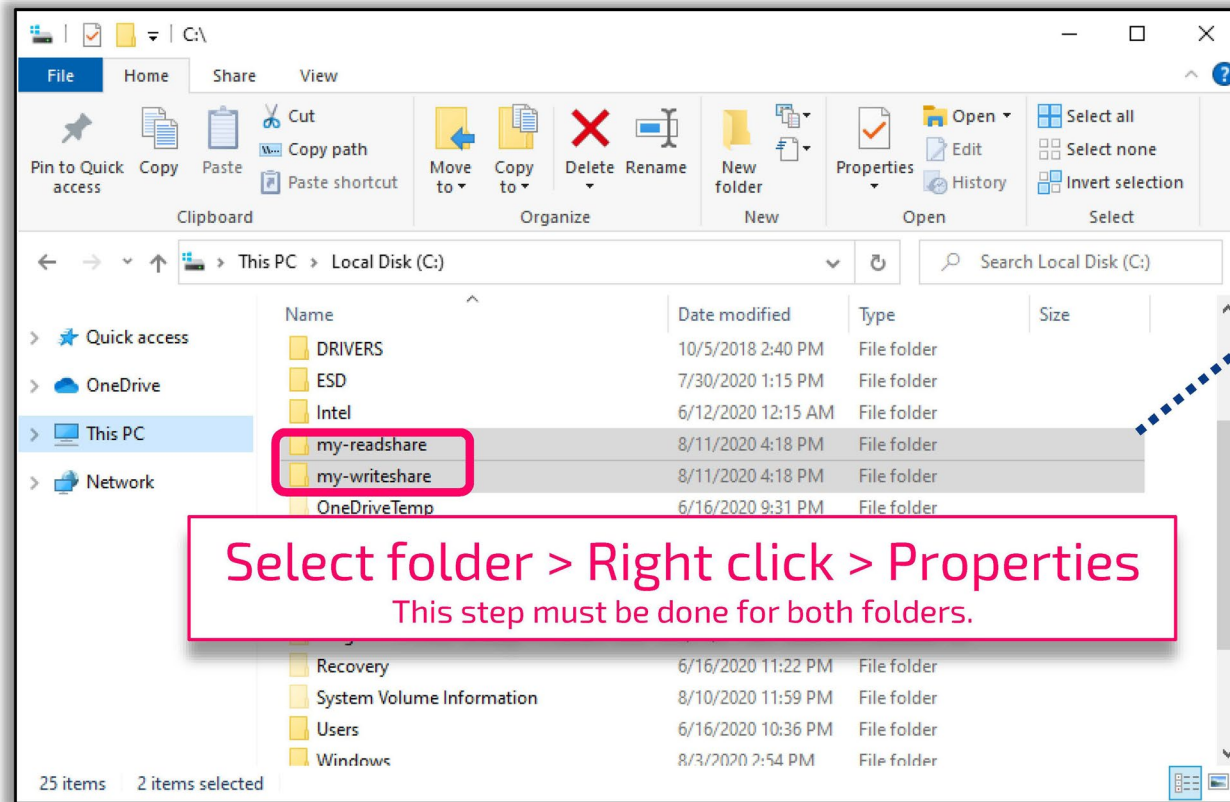
- Network and Sharing Center:** The main window showing network status. Under 'View your active networks', the 'Unidentified network' (Public network) is shown. The 'Connections' list includes 'Ethernet', which is highlighted with a red box. A blue dashed arrow points from this box to a text box below.
- Ethernet Properties:** A window showing the list of protocols installed for the Ethernet connection. 'Internet Protocol Version 4 (TCP/IPv4)' is selected and highlighted with a red box. The 'Properties' button at the bottom right is also highlighted with a red box.
- Internet Protocol Version 4 (TCP/IPv4) Properties:** A window showing the configuration for the selected protocol. The 'Use the following IP address' radio button is selected. The 'IP address' field is set to '192 . 168 . 1 . 1' and is highlighted with a red box. The 'Subnet mask' is set to '255 . 255 . 255 . 0'.

A text box at the bottom of the Network and Sharing Center window contains the instruction: **Beside Public Network, click 'Ethernet'**.

Local PC – WINDOWS 10: Folder Setup & Security

Create read and write folders for REBEL to access:
Choose any desired folder names or path
(Example: 'C:\my-readshare' and 'C:\my-writeshare')

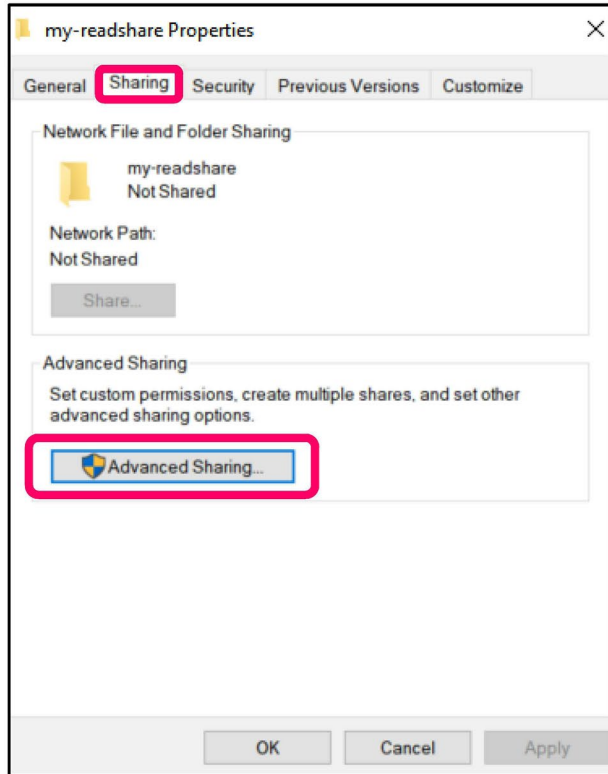
Ensure user permissions are set appropriately for both folders
(Example: all domain users can read & write to this folder)



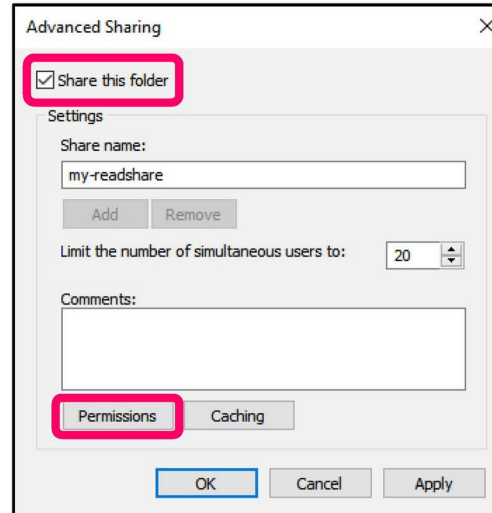
Local PC – WINDOWS 10: Sharing Permissions

Perform steps 1 to 4 for BOTH read and write folders

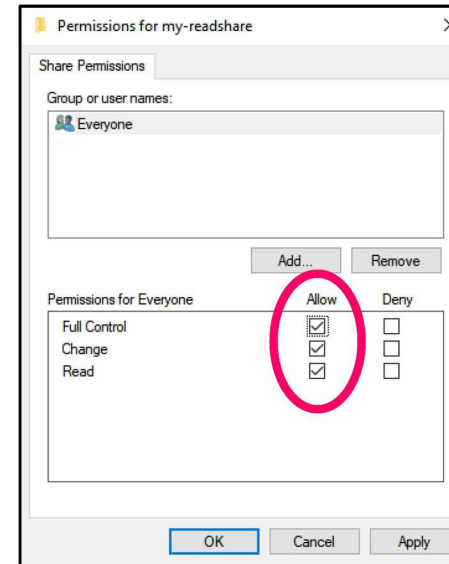
1. In folder Properties, select the 'Sharing' tab> 'Advanced Sharing ...'



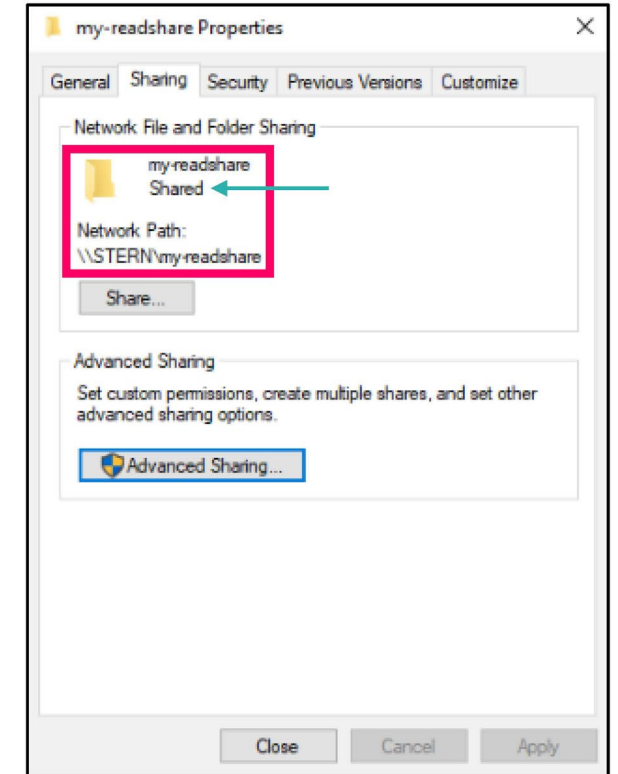
2. Check 'Share this folder' and select 'Permissions'



3. Allow full control and hit apply. Select OK. Then hit apply and OK in 'Advanced Sharing'



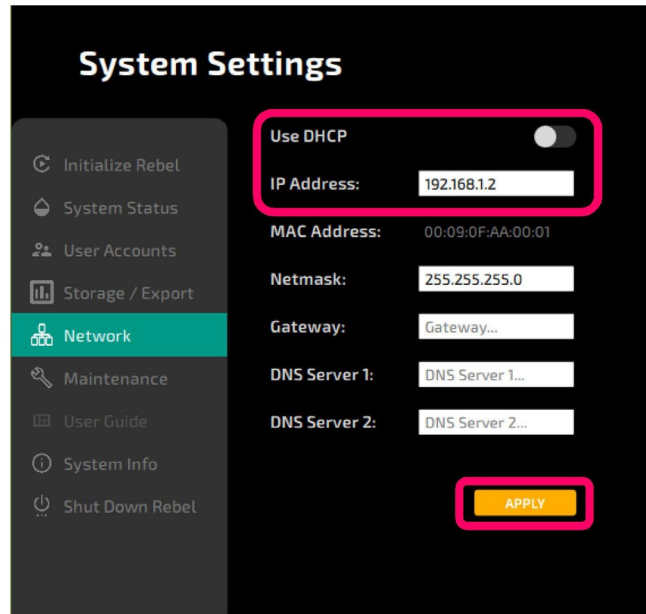
4. Confirm folder is 'Shared' and Network Path is correct



REBEL Network Configuration and Storage

System Settings > Network

1. Disable 'Use DHCP'
2. Set a Static IP for the REBEL in the same sub-net
First 3 sets of numbers need to match the LOCAL PC Fourth set of numbers MUST be different (unique host)
(Example: REBEL IP - 192.168.1.2)
3. Hit 'Apply'



System Settings

- Initialize Rebel
- System Status
- User Accounts
- Storage / Export
- Network**
- Maintenance
- User Guide
- System Info
- Shut Down Rebel

Use DHCP ☐

IP Address: 192.168.1.2

MAC Address: 00:09:0F:AA:00:01

Netmask: 255.255.255.0

Gateway: Gateway...

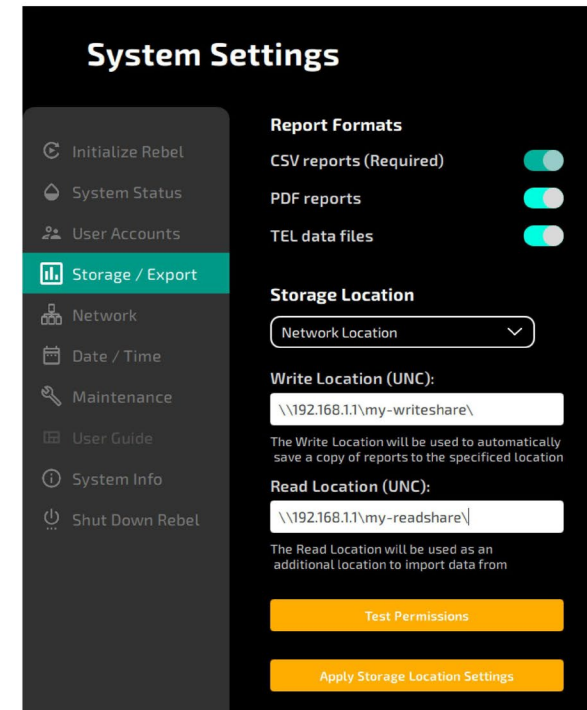
DNS Server 1: DNS Server 1...

DNS Server 2: DNS Server 2...

APPLY

System Settings > Storage/Export

1. Under Storage Location, select 'Network Location'
2. Enter write and read locations in the format:
\\Local PC IP\foldername\
(Example: Local PC IP - 192.168.1.1)
3. Hit 'Apply' then 'Test Permissions'



System Settings

- Initialize Rebel
- System Status
- User Accounts
- Storage / Export**
- Network
- Date / Time
- Maintenance
- User Guide
- System Info
- Shut Down Rebel

Report Formats

- CSV reports (Required) ☒
- PDF reports ☒
- TEL data files ☒

Storage Location

Network Location

Write Location (UNC):

\\192.168.1.1\my-writeshare\

The Write Location will be used to automatically save a copy of reports to the specified location

Read Location (UNC):

\\192.168.1.1\my-readshare\

The Read Location will be used as an additional location to import data from

Test Permissions

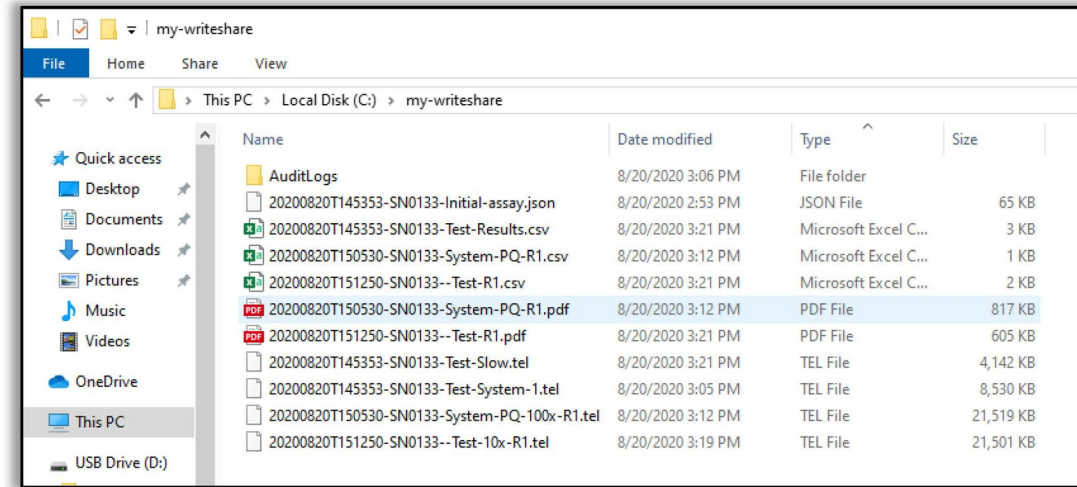
Apply Storage Location Settings

NOTE: When prompted on the REBEL, enter the username/password for the Local PC's Authorized User

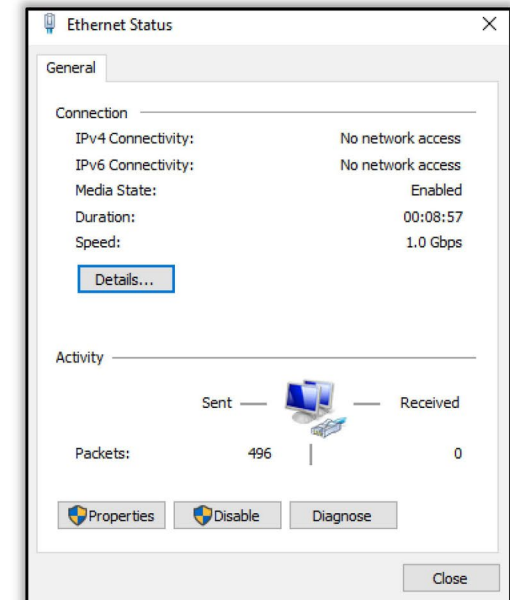
Username may require the domain in the format: DOMAIN\username

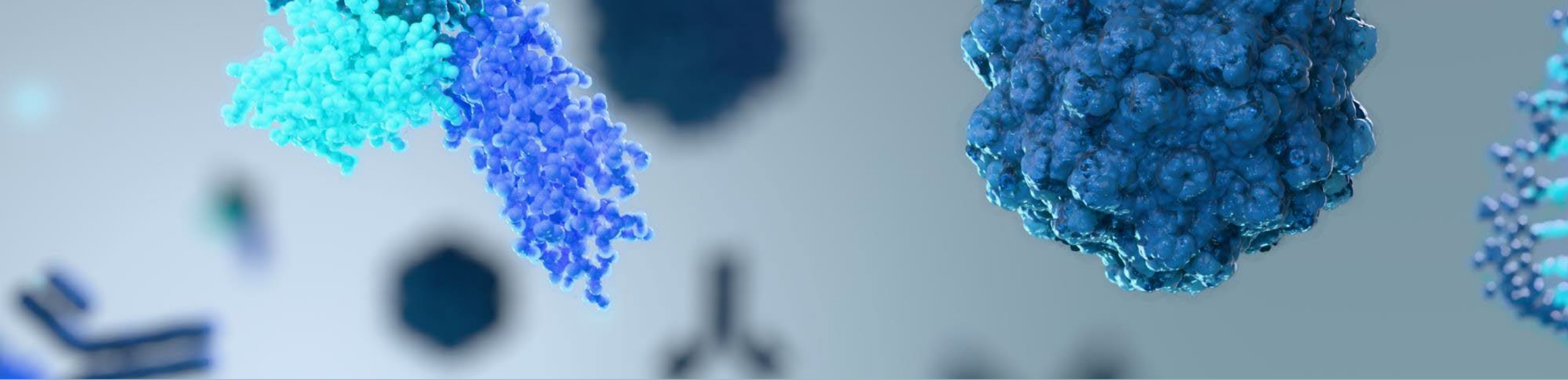
Verify P2P Success

Confirm 'writeshare' folder contains a similar set of files after a sample is run



When in doubt...confirm ethernet is connected and functioning!





Thank you

Technical Support | TechSupport@repligen.com

www.repligen.com

