

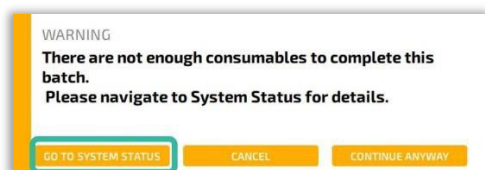
Using REBEL Spent Media Analysis (SMA) Kit

PATsmart™ REBEL® System

Support Document

Need assistance? For more information, contact Tech Support at TechSupport@repligen.com.

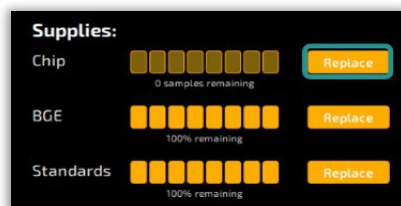
1. **Check Status** of consumables on your PATsmart™ REBEL® device by tapping on System Settings [⚙️] and navigating to [📊] System Status. This screen will show the levels of BGE and Standards and the amount of sample runs left on the chip. Also, the REBEL System will warn you when consumables need to be replaced.



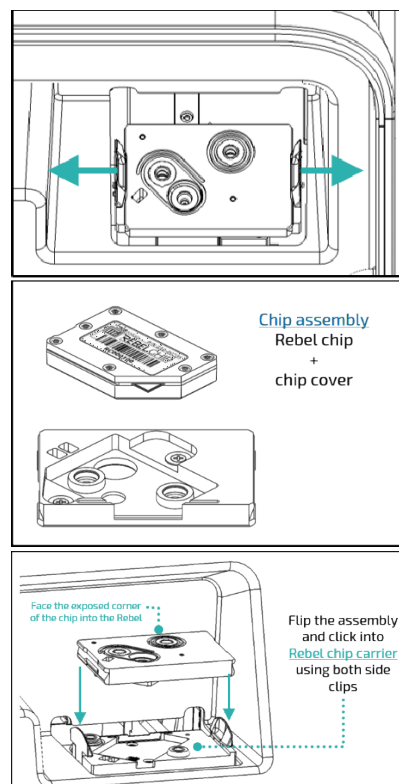
If you do not need to swap in new consumables yet, refrigerate the standards. The BGE and diluent bottles can be stored capped at room temperature along with the REBEL chip and microwell plates.

2. Replace REBEL Chip

- To install a new REBEL chip, press Replace next to chip status.



- Open the REBEL door. The chip carrier will be visible at the top-right interior. Gently push side tabs on chip carrier outwards and pull the chip assembly up to release it. If present, remove used chip from cover.
- Place chip cover on a clean surface with the bottom up (screwheads should be visible). Seat the new chip (barcode up) into the matching recess until flush.
- Flip assembly over with barcode down, then carefully clip the assembly into the REBEL chip carrier. Be sure to click the assembly flush on both sides.
- Close REBEL door firmly.



repligen.com

ZIPCHIP AND REBEL ARE FOR RESEARCH USE ONLY

ZipChip and REBEL are subject to export controls including those of the Export Administration Regulations of the U.S. Department of Commerce, which may restrict or require licenses for the export of product from the United States and their re-export to and from other countries. © 2025 Repligen Corporation. All rights reserved. The trademarks mentioned herein are the property of Repligen Corporation and/or its affiliate(s) or their respective owners.

